

Red Cross Communications And Amateur Radio Operations

Getting the message through...

John Staples, KI6ZWW

Sacramento County ARES Emergency Coordinator

Gregory Kruckewitt, KG6SJT,

Yolo County ARES Emergency Coordinator

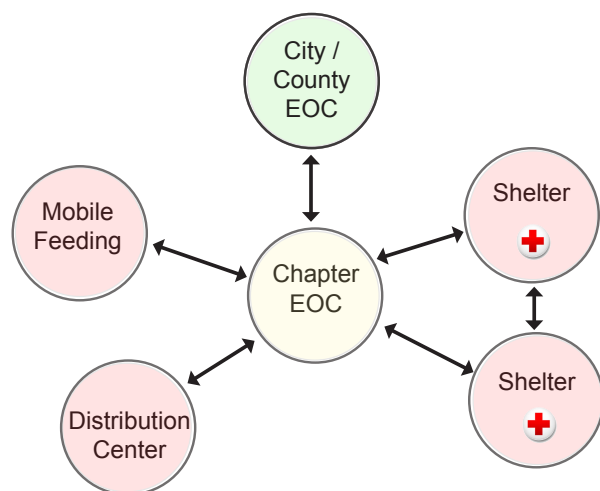


Overview of Workshop

- Shelter Communications
- Messages in a Shelter
- How Amateur Radio Can Help
- ICS-213 Message Form
- Exercise: Copy a Message
- Summary of Workshop
- Questions?

2

Shelter Communications



3

Messages in a Shelter...

Types of messages:

- urgent
- private
- data intensive
- some messages require a reply

4

How Amateur Radio Can Help



- Amateur radio operators are
 - Trained communicators
 - Can send and receive complex messages via radio by voice or digitally
 - Capable of portable, rapid response
 - Not reliant on internet or communication infrastructures

5

California Rim Fire

- Amateur radio operators spent over 780 hours supporting shelters and the EOC



6

ICS- General Message Form

- Written messages are formatted to make sure the message is transmitted and received accurately

ICS-213 (ARES Version)										
NUMBER	PRECEDENCE (Circle One)	FROM STATION	CHECK	PLACE OF ORIGIN	TIME FILED	DATE FILED				
	Emergency Priority MFR Routine				1	2				
TO:		POSITION:								
FROM:		POSITION:								
SUBJECT:										
MESSAGE BODY:										
						5				
						10				
						15				
						20				
						25				
						30				
						35				
						40				
						45				
SIGNATURE:		POSITION:								
RECEIVED BY:		(Call Sign)		RECEIVED DATE:		1	2	RECEIVED TIME:		
REPLY:		CHECK		TIME FILED		1				
						5				
						10				
						15				
						20				
						25				
						30				
						35				
DATE:		TIME:		SIGNATURE/POSITION:						

ICS 213 Complaint Amateur Radio Message Form - (80) County ARES

5/196

7

When You Write a Message...

Keep these points in mind:

- Keep it short
- Keep it focused
- Don't worry about "niceties"
No need for "Please", "Thank you"

8

Sample Long message...

To: John Staples, EOC

Hi John. We are expecting 10 more clients this evening. We would like you to send 10 more meals to the Esparto Shelter. We will have 28 clients for dinner. Thank you.

This message is 37 words long

Same Info in a Shorter Message

To: John Staples, EOC

10 more clients expected in Esparto Shelter tonight. Meals for 28 now needed.

This message is 15 words long

9

10

ICS- 213 Preamble & Addresses

ICS-213 (ARES Version)									
NUMBER	PRECEDENCE (Circle One)				FROM STATION	CHECK	PLACE OF ORIGIN	TIME FILED	DATE FILED
	Emergency	Priority	H&W	Routine				:	/ /
TO:					POSITION:				
FROM:					POSITION:				
SUBJECT:									

- Radio operator will fill in the preamble to insure the message is sent accurately.
- The *TO* and *FROM* fields are very important. When filling out a form make sure *TO* and *FROM* are accurate and spelled correctly.

11

ICS- 213 The Message Body

MESSAGE BODY:				
				5
				10
				15
				20
				25
				30
				35
				40
				45
SIGNATURE:			POSITION:	

- The message should be brief and to the point. Focus on content of message - 45 words or less
- *Note:* radio operators will use the *proword* X-RAY for periods.

12

ICS- 213 If a Reply is Needed

REPLY					
REPLY TO MESSAGE NUMBER: <small>(Message number above)</small>	FROM STATION	CHECK	PLACE OF ORIGIN	TIME FILED	DATE FILED
					5
					10

- If a reply to the message is required, it will be recorded at the bottom of the message.

13

Activity

Receiving a message

ICS-213 (ARES Version)						
NUMBER	PRECEDENCE (Circle One)			FROM STATION	CHECK	PLACE OF ORIGIN
	Emergency	Priority	H&R	Routine		
TO:					POSITION:	
FROM:					POSITION:	
SUBJECT:						
MESSAGE BODY:						
						5
						10
						15
						20
						25
						30
						35
						40
						45
SIGNATURE:					POSITION:	
RECEIVED BY:					(Call Sign)	
RECEIVED DATE:					/ /	RECEIVED TIME:
REPLY:					CHECK	TIME FILED
						5
						10
						15

14

Questions?

Summary

- Shelter Communications
- Messages in a Shelter
- How Amateur Radio Can Help
- ICS-213 Message Form
- Exercise: Copy a Message

15

16

For more information...

- www.sacvalleyares.org

Click on Documents, then Training

- John Staples, KI6ZWW

Sacramento County Emergency Coordinator

Cell: 916- 612-8354

Email: ki6zww@hotmail.com

<http://sacramentoares.org>

- Gregory Kruckewitt, KG6SJT

Yolo County Emergency Coordinator

Cell: 530-219-0611

Email: kg6sjt@gmail.com

www.yoloares.org